

LEEDS INTERNATIONAL CHAMBER SERIES 2025/26

ROUTE / ROOT

The Venue at
Leeds Conservatoire

LEEDS

INTERNATIONAL
CONCERT SEASON

LEEDS **ARTS**
EVENTS & VENUES



Leeds
CITY COUNCIL

ROUTE / ROOT

From the first time I came to Leeds for the Leeds International Piano Competition in 2024 to now returning as curator of the 2025/26 Leeds International Chamber Series feels like a full-circle moment – one filled with gratitude, curiosity, and a sense of both humility and light. It's a chance for me to share music that speaks deeply to who I am and how I grow.

This season, titled *Route/Root*, is an exploration of identity through sound – the paths we travel, the cultures that shape us, and the places, both literal and emotional, that we call home. I've always been drawn to these questions. Growing up surrounded by different cultures, my passion for contrasting heritages and musical voices has become very important to my artistic life. Each concert moves between genres, time and tradition – from Baroque reimagined with Nordic folk colour to French modernism and spiritual reflections through contemporary lenses. The artists explore what grounds them, what moves them, and how identity is formed in the space between.

I've invited musicians who are not only extraordinary artists but also some of my closest friends – people I trust completely to bring vulnerability, joy, and depth to the stage. The series includes an eclectic mix of ensembles: the earthy, imaginative sound of folk/Baroque fusion ensembles, woodwind-string-piano trios, fiery piano quartet, and the grandeur of two pianos sharing one sound-world. Each group offers a unique expression of movement and rootedness, stillness and transformation.

I hope these concerts create moments of resonance, for you to reflect, connect, and perhaps to find pieces of your own story in the music, to trace your own route and feel your own root.

Junyan Chen
Artistic Director

All concerts start at 7.30pm



Scan this QR code to view all concerts on your mobile.

Junyan Chen
Photo © Radski



TUE 7 OCTOBER 2025

LODESTAR TRIO

MAX BAILLIE violin

OLAV MJELVA Hardanger fiddle

ERIK RYDVALL nyckelharpa

Programme to include works by Johann Sebastian Bach, Antonín Dvořák, Béla Bartók, François Couperin, Olav Mjelva, Tarquinio Merula, and Erik Rydval.

For full programme details please visit
leedsconcertseason.co.uk.

Lodestar Trio blends Baroque forms with Nordic folk colours and improvisation, highlighting shared rhythmic drive and melodic ornament. Rooted in both classical and oral traditions, this music feels alive – crossing borders and generations and speaking to identity as something both inherited and reshaped. In this concert, Johann Sebastian Bach's suites are reimagined through the rich textures of the traditional Norwegian Hardanger fiddle, Swedish nyckelharpa and violin.

YOU CAN FEEL THE HAPPINESS AS A LISTENER... EVERY NOTE OF THE TRIO CONVEYS LIGHTNESS AND JOY...

FOLKER





Photo © Ian Rowson

TUE 18 NOVEMBER 2025

TRIO ARISONTO

ANNEMARIE FEDERLE horn

EZO SARICI violin

HARRY RYLANCE piano

VOLKER DAVID KIRCHNER

Lamento d'Orfeo (for horn and piano)

CLARA SCHUMANN

Three Romances (for violin and piano)

RICHARD WAGNER ARR HARRY RYLANCE

Tannhäuser: Overture

MAURICE RAVEL ARR ANNEMARIE FEDERLE

Pavane pour une infante défunte

JOHANNES BRAHMS

Horn Trio

In a journey through Romantic intensity and lyrical introspection, Volker David Kirchner's *Lamento* and Clara Schumann's *Romances* explore quiet vulnerability, while Richard Wagner's *Tannhäuser* and Johannes Brahms' Horn Trio reflect grandeur and emotional complexity. These works show how memory and voice evolve through time, echoing Route/Root's themes of personal expression, transformation, and belonging through music.

4 SPARKS FLEW AND WE WERE GIVEN A SPIRITED PERFORMANCE.7

NICHOLAS YONGE SOCIETY

TUE 2 DECEMBER 2025

LONDINIUM CONSORT

RACHEL ALLEN soprano

EMANUELE ADDIS lute and cittern

OTTO HASHMI recorder and eCorder

ÖZGÜR KAYA viola da gamba

MIKOŁAJ PISZCZOROWICZ viola da gamba

Programme to include music by Otto Hashmi, John Dowland, William Brade, Robert Johnson, Owen Spafford, Emanuele Addis, and Rachel Allen.

For full programme details please visit
leedsconcertseason.co.uk.

Londinium Consort brings together period instruments and modern sensibilities, creating a concert that questions what it means to belong – then and now.

Elizabethan songs, folk ballads and new compositions meet in this layered programme on exile and migration. Music by John Dowland and William Brade tells of musicians who travelled across Europe in search of work and expression. These are paired with new works by young composers that respond to history with stories of immigration, longing, and personal rebirth.

4 ABSOLUTELY BREATHTAKING PERFORMANCE! MANY TIMES I OVERHEAD PEOPLE SAYING THEY'D NEVER HEARD ANYTHING LIKE IT.7

WIGMORE HALL AUDIENCE MEMBER





TUE 20 JANUARY 2026

TEMPORAL HARMONIES INC

LYDIA WALQUIST flute

MIKOŁAJ PISZCZOROWICZ cello

XIAOWEN SHANG piano

CLAUDE DEBUSSY

Piano Trio

LILI BOULANGER

D'un matin de printemps

FRANCIS POULENC

Trio for oboe, bassoon and piano

MAURICE RAVEL

Piano Trio

PAUL SCHOENFIELD

Café Music

Temporal Harmonies Inc traces the many faces of French music – from Claude Debussy's shimmering impressionism to Lili Boulanger's luminous spring morning. Francis Poulenc brings wit and elegance, while Maurice Ravel's trio offers emotional sweep and rhythmic precision. Paul Schoenfield's jazz-infused Café Music brings the programme to a close with energy and charm. Together, these works reveal how style, place and individuality shape sound, and how tradition evolves through personal voice.

41 I WANT THE LISTENER TO WALK AWAY WITH HOPE AND CURIOSITY...7

LYDIA WALQUIST, FLAUTIST

TUE 10 FEBRUARY 2026

ENSEMBLE JACKALOPE

CHARLOTTE SPRUIT violin

EDGAR FRANCIS viola

HUGH MACKAY cello

JUNYAN CHEN piano

FRANK BRIDGE

Phantasy for Piano Quartet

GEORGE ENESCU

Piano Quartet No 2

ANNA THORVALDSDDOTTIR

Shades of Silence

GABRIEL FAURÉ

Piano Quartet No 1

Ensemble Jackalope's programme is about contrast: movement and stillness, familiarity and strangeness. From Frank Bridge's lyrical English chamber music to George Enescu's fiery Romanian-French hybrid, the first half explores national character and rich harmonic worlds. After the interval, Anna Thorvaldsdottir's *Shades of Silence* brings a meditative stillness, where time stretches, and texture takes centre stage. Gabriel Fauré's Piano Quartet No 1 concludes with grace and emotional depth.

4AN EXHILARATING AND TECHNICALLY THRILLING PERFORMANCE.7

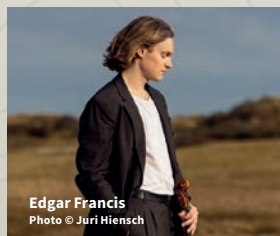
GRAMOPHONE ON JUNYAN CHEN



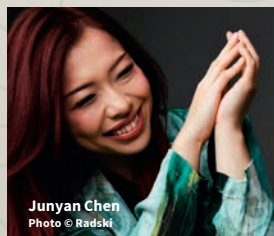
Charlotte Spruit
Photo © Marco Borggreve



Hugh Mackay



Edgar Francis
Photo © Juri Hiensch



Junyan Chen
Photo © Radski

TUE 24 MARCH 2026

JUNYAN CHEN

piano

ALIM BEISEMBAYEV

piano

FRANCIS POULENC

Elégie (for two pianos)

FRANCIS POULENC

Sonata for piano four hands

SERGEI RACHMANINOV

Suite for two pianos No 1

SERGEI RACHMANINOV

Symphonic Dances (for two pianos)

Echoing Route/Root's themes of memory, migration and the tension between vulnerability and grandeur, this all-20th-century programme for two pianos balances intimacy and power. Francis Poulenc's *Elégie* is brief but poignant, while his Sonata for piano four hands is full of quirky charm.

Sergei Rachmaninov's tender, glittering and dramatic Suite No 1 paints musical portraits from poetry. His *Symphonic Dances* close the concert with bold, orchestral force. These works speak to the dual nature of performance – individual expression and shared artistry.

‘ALIM BEISEMBAYEV IS, BEYOND DOUBT, A REMARKABLE TALENT, AND ON PRESENT EVIDENCE A PRETTY FULLY FORMED ONE, AT THAT.’

SEEN & HEARD INTERNATIONAL



Photo © Radski

ACCESS & LOCATION



The Venue at Leeds Conservatoire

St Peter's Square, Quarry Hill, Leeds, LS2 7PD

what3words: ///likely.jeeps.senses

The Venue at Leeds Conservatoire is located on St Peter's Square, across the road from Leeds Bus Station. Access is through the door to the left after you have passed the BBC building, opposite The Wardrobe. This door is opened one hour before the performance starts.

For more information on how to find The Venue at Leeds Conservatoire, please visit our website, or contact Leeds Ticket Hub using the details on the back page of this brochure.



Whilst we encourage our audiences to use public transport, we realise this isn't always possible. The nearest car parks are NCP – Leeds Markets and Victoria Gate. If attending with friends, please consider car sharing to help us to reduce our carbon footprint.

The nearest blue badge parking can be found on St Peter's Square.



Leeds Conservatoire has lift access to all floors, with accessible toilets at The Venue, and in the Café Bar.

Essential Companion Scheme

We offer two tickets for the price of one to customers who require an essential companion to attend. Please contact Leeds Ticket Hub to find out more.

Support dogs are welcome.

When booking, please let us know if you have any access requirements.



The Venue is equipped with an infra-red system for the hard of hearing.



To order a copy of this brochure in an alternative format, please contact us by:

Phone: **0113 378 6600** or

Email: **music@leeds.gov.uk**



Leeds Conservatoire is easily accessed by public transport, located across the road from Leeds Bus Station and 15 minutes' walk from Leeds Train Station.



There is cycle parking directly outside Leeds Conservatoire.



Scan this QR code to view all concerts on your mobile.

TICKET PRICES & BOOKING INFORMATION

TICKET PRICES	A	B
Standard	£28.50	£26.50
Over 60s	£26.50	£24.50
Full-time students, unwaged, LeedsCard Extra	£14.50	£13.50
Under 30s	£10	£10

Under 30s tickets are available from Wed 6 August.
The multibuy offer is not available for this ticket type.

MULTIBUY OFFER

Book all six Leeds International Chamber Series concerts in the same transaction to receive multibuy offer benefits:

- **Save 20% on ticket prices**
- **Be the first to hear about future events**
- **Choose the best seats available for all concerts**

Feeling adventurous? You can also mix and match across the Leeds International Piano Series – book any six concerts in total across both series to save 20%. Please contact Leeds Ticket Hub for more information.



BOOKING DATES

Wed 9 July: Booking opens for subscribers to Leeds International Chamber Series 2024/25 renewing their seats

Wed 23 July: Booking opens for new multibuy offer customers

Wed 6 August: General booking opens



BOOK ONLINE

leedsconcertseason.co.uk

BOOK BY TELEPHONE

0113 376 0318

The booking line is open from 10am – 4pm,
Monday to Saturday.

BOOK IN PERSON OR BY POST

Leeds Ticket Hub, Carriageworks Theatre,
The Electric Press, 3 Millennium Square,
Leeds, LS2 3AD

Email: tickets@leeds.gov.uk

Leeds Ticket Hub is open for in-person bookings two hours before any show at the Carriageworks Theatre.
(carriageworkstheatre.co.uk)

Cheques should be made payable to *Leeds City Council*.

TALK TO US!

You can talk to the Leeds International Concert Season team by:

Email: music@leeds.gov.uk

Phone: 0113 378 6600

Post: Carriageworks Theatre, The Electric Press,
3 Millennium Square, Leeds, LS2 3AD

JOIN OUR MAILING LIST!

Sign up for event updates, behind-the-scenes
exclusives and special offers.

Visit leedsconcertseason.co.uk for more information.



@leedsconcerts



@LeedsInternationalConcertSeason



Safeguard your tickets against accidents, illness,
rail strikes and more. Add refund protection to your
booking for peace of mind. Please contact Leeds Ticket
Hub for more information.

Whilst every effort is made to avoid changes, Leeds International Concert Season reserves the right to change artists and programmes without notice if unavoidable.

Printed by: LCC Print Unit • Printed on paper sourced from sustainable forests • Designed by: Design It – designit-uk.com